



INSTRUCTION BOOKLET

Keep This Booklet Safe.
Version 0.5



AstroCity User Manual



Powering On & Off

Power On:

- Make sure the Back Power switch is turned on and lit Red (First time you switch this the machine will auto start.)
- If you have previously pressed the side power button to turn the machine off, pressing it again will turn the machine back on.

Power Off:

- Pressing the Side Power button will shutdown the machine, pressing it again will restart the machine.
- After pressing the Side Power button, you can then press the Back Power button to completely turn off the machine.



“Use the Mains power switch and Power button to safely turn on/off the arcade.”



Navigation & Controls

Main Menu Navigation:

- D-Pad / Joystick → Move
- A → Select
- B → Back
- Start → Main Menu
- Select → Quick Menu

In-Game Controls:

- A/B/X/Y → Action buttons
- Start → Pause / Start game
- Select → Insert Coin (arcade games)
- Select + Start → Exit game

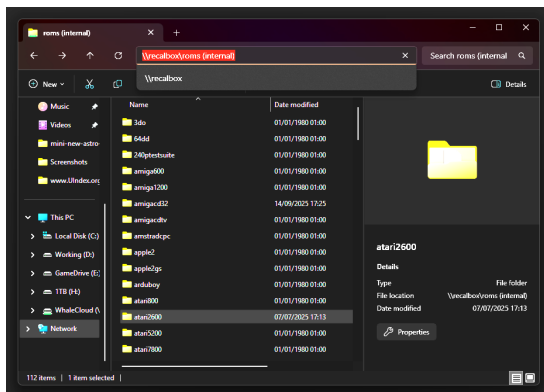


“Use the joystick/D-Pad to navigate the menu, Start/Select buttons for options.”



Adding Games (ROMs)

1. Connect your arcade to Wi-Fi or Ethernet.
2. On your PC:
 - Windows: \\RECALBOX
 - Mac: smb://recalbox
3. Open the roms folder.
4. Copy game files into the correct console folder (e.g., snes, mame).
5. Restart the system or update the game list.



“Access your arcade over the network to add games to the correct system folders.”



Saving & Loading Games

- **Save State:** Hotkey + X
- **Load State:** Hotkey + Y
- **Exit Game:** Hotkey + Start

The Hotkey button is Select.

- The Quick Menu can be accessed in-game by pressing “Select - B”



“Use the quick menu to save, load, or exit games easily.”



Settings

- Audio: Start → Sound Settings
- Controllers: Start → Controller Settings → Configure Input
- Display: Start → UI Settings



“Adjust audio, controllers, and display settings from the main menu.”



USB Controller Setup & Player Switching

Connecting Your USB Controller

1. Plug your USB controller into any available USB port on the arcade.
2. Power on your arcade system.
3. Recalbox should automatically detect the controller and show a “Controller Detected” message.



“Recalbox detects any USB controller automatically.”

Configuring the Controller

1. Press Start on any controller to enter the Main Menu.
2. Navigate to Controller Settings → Configure a Controller.

3. Follow the on-screen prompts to assign buttons:

- D-Pad / Joystick
- A, B, X, Y (or main action buttons)
- Start / Select / Hotkey buttons

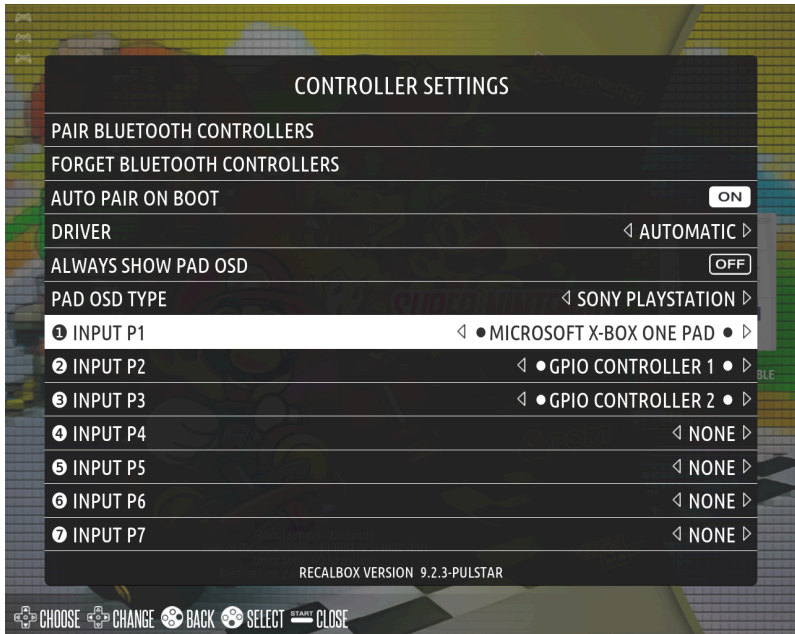
4. Once finished, press Start to save configuration.



Tip: You can use a mix of USB and built-in arcade controllers; each will be assigned a player number during configuration.

Switching Player Number

- By default, the first controller plugged in is Player 1, the next is Player 2, etc.
- To reassign a controller to a different player:
 1. Go to Main Menu → Controller Settings → Assign Controller to Player.
 2. Select the controller you want to reassign.
 3. Choose the Player number (1–4).
 4. Press Start to confirm.



“Reassign controllers to different players for multiplayer games.”

The Arcade has 2x built in controllers,

- GPIO1 CONTROLLER (Built in arcade)
- GPIO2 CONTROLLER (Not connected)

When you plug in a controller if you wish to use it as Player1 then change INPUT P1 to the controller you want to use.

If you wish to use a plugged in controller as player 2, then select your gamepad under INPUT P2.



Testing the Controller

1. Go to Main Menu → Start a Game.
2. Check that each controller corresponds to the correct player and all buttons respond properly.
3. If any button doesn't work, repeat the configuration steps.



Selecting Systems & Games

Navigating Systems

- From the **main Recalbox menu**, each system (NES, SNES, Arcade, etc.) is shown as a **Vertical carousel**.
- Use **up/down** on your joystick or D-pad to scroll through available systems.
- Press **A / Start Button 1** to enter a system.



“Scroll up and down to choose a system.”

Choosing a Game

- Inside a system, scroll up/down to browse the game list.
- Highlight the game and press **A / Start Button 1** to launch it.
- Press **B** to go back to the system menu.




“Highlight a game and press A to play.”



Adding & Displaying Favourites

Marking a Favourite

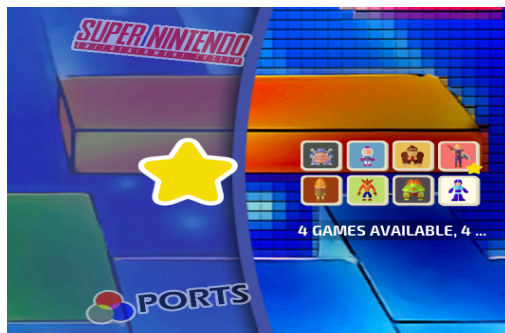
1. Highlight the game in the list.
2. Press the **Y button** (or equivalent on your controller).
3. A  controller icon will appear next to the game's name, marking it as a favourite.



“Press Y to add a game to favourites.”

Viewing Favourites


- From the main menu, scroll to the **‘Favourites’ system.**
- This system is automatically created once you’ve added at least one favourite.
Launch your starred games directly from this menu.



“Your favourite games are collected in one place.”

Removing a Favourite

- Highlight the game in the favourites list.
- Press **Y** again to remove the star.

 **Tip:** Favourites are great for keeping your most-played games quick to access without scrolling through huge game lists.

Notes & Troubleshooting

- If a controller isn't detected, try a different USB port.
- Some third-party controllers may need to be reconfigured after every Recalbox update.
- Built-in arcade cabinet buttons are automatically mapped based on player number.



Accessing the Web Interface

Connecting to the Web Interface

1. Make sure your arcade is connected to the **same network** as your PC or device (Wi-Fi or Ethernet).

2. On your arcade, go to **Main Menu** → **System Settings** → **Network Settings** → **IP Address**.
3. Note the **IP address** displayed (e.g., `192.168.1.25`).

Accessing from a PC or Device

1. Open a **web browser** (Chrome, Firefox, Edge, etc.) on your computer or tablet.

Enter the arcade's IP address in the address bar:

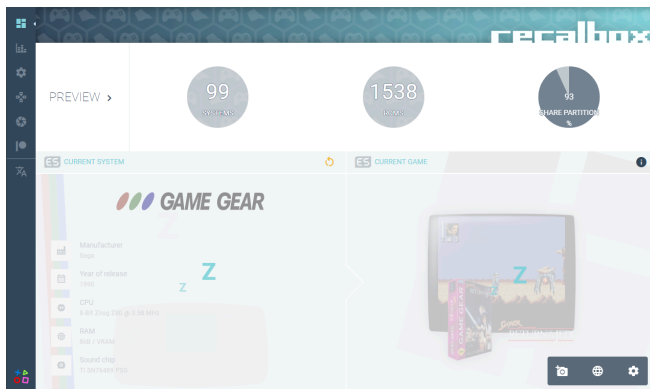
`http://<IP_ADDRESS>`

2. Example: `http://192.168.1.25`
3. You should see the **Recalbox Web Interface login page**.
(Login: **root** Password: **recalboxroot**)

Basic Overview of Web Interface

The Recalbox web interface allows you to:

- **Manage ROMs:** Upload new games directly to your arcade.
- **Controller Configuration:** Map and test USB or built-in controllers.
- **System Settings:** Adjust network, audio, video, and other preferences.
- **Game List:** Browse installed games and start them remotely.
- **Updates:** Apply system updates without directly accessing the arcade.



“Use the web interface to manage your arcade system from any device on your network.”

Tips & Notes

- Make sure your PC and arcade are on the **same local network**.
- If the web interface does not load, check:
 - The IP address is correct.
 - Your firewall or antivirus isn't blocking the connection.
 - Arcade and PC are both connected to the same router.
- For security, avoid exposing the web interface to the internet unless you know what you're doing.



Troubleshooting

- No Games Showing: Check ROMs are in the correct folder and restart the game list.
- Controller Not Working: Reconfigure input in settings.

- System Frozen: Hold power until off, then restart.



Safety Notes

- Don't unplug while powered on.
- Keep drinks away from the arcade cabinet.
- Only use ROMs you legally own.

SOS

Other Help

You can contact us directly for any questions regarding your Arcade, or any of our products via Email.

- HandiWorxCraftLabGroup@GMail.com

Or visit our website for anything else:

- AstroArcade.co.uk



www.AstroArcades.co.uk